

Technical Analysis

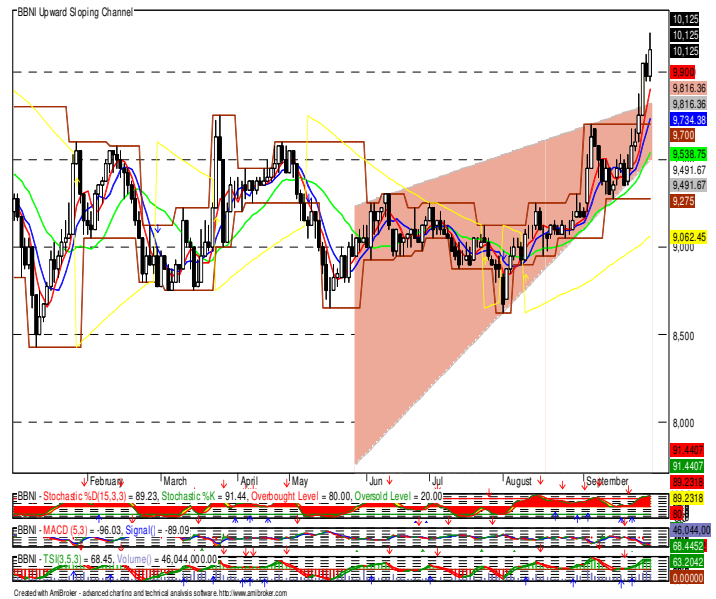
29 September 2023

BBNI		TRADING BUY	
S1	10050	R1	10250
S2	9850	R2	10450
Closing Price	10125		
Analyses	<ul style="list-style-type: none">• MACD & signal line seen in positive indication• Stochastics fast line & slow indicates positive momentum• Candle chart pattern indicates bullish trend• RSI is inside overbought area• The price on upper band area		
Recommen dation	<ul style="list-style-type: none">• Trading range Rp 10050-Rp 10250• Entry Rp 10125, Take Profit Rp 10250		
Indicator	Value	Signals	
Stochastics	91.44	Positive	
MACD	-96.03	Positive	
True Strength Index (TSI)	68.45	Positive	
Bollinger Band (Mid)	9404	Positive	
MA5	9545	Positive	

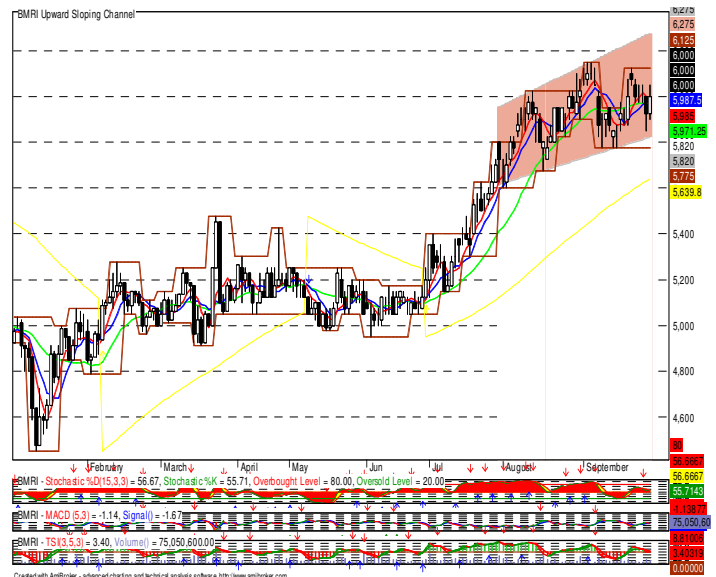
Trends	Major	Up	Minor	Up
--------	-------	----	-------	----

BBNI Upward Sloping Channel

Technical analysis chart for BBNI showing an upward sloping channel from February to September. The chart includes price bars, a red channel, and various indicators: Stochastic %K (89.23), Stochastic %D (85.23), MACD (5.31), TSI (68.45), and Volume (46,044,000.00). The price is currently at 10,125, near the upper band of the channel.



BMRI		TRADING BUY						
S1	5875	R1	6075	Trends	Major	Up	Minor	Up
S2	5675	R2	6275					
Closing Price		6000						
Analyses		• MACD & signal line seen in positive indication						
		• Stochastics fast line & slow indicates negative momentum						
		• Candle chart pattern indicates positive trend						
		• RSI is inside neutral area						
Recommen dation		• The price on upper band area						
		• Trading range Rp 5875-Rp 6075						
		• Entry Rp 6000, take Profit Rp 6075						
Indicator	Value		Signals					
Stochastics	55.71		Negative					
MACD	-1.14		Positive					
True Strength Index (TSI)	3.40		Positive					
Bollinger Band (Mid)	5971		Positive					
MA5	5995		Positive					



Technical Analysis

29 September 2023

ADRO

TRADING BUY

S1 2820

R1 2920

Trends

Major

Down

Minor

Up

S2 2720

R2 3020

Closing Price 2870

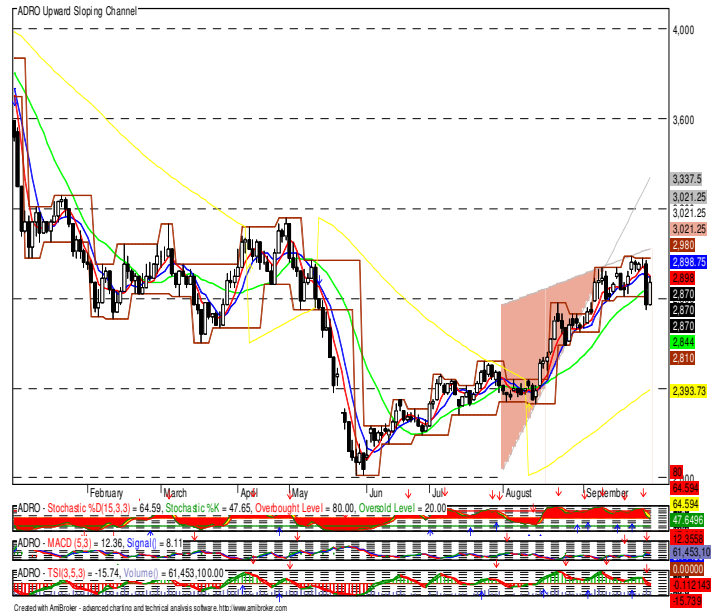
Analyses

- MACD & signal line seen in positive indication
- Stochastics fast line & slow indicates negative momentum
- Candle chart pattern signal rebound potential
- RSI is inside neutral area
- The price on upper band area

Recommendation

- Trading range Rp 2820-Rp 2920
- Entry Rp 2870, take Profit Rp 2920

Indicator	Value	Signals
Stochastics	47.65	Negative
MACD	12.36	Positive
True Strength Index (TSI)	-15.74	Positive
Bollinger Band (Mid)	2817	Positive
MA5	2920	Positive



EXCL

BUY ON WEAKNESS

S1 2300

R1 2400

Trends

Major

Up

Minor

Down

S2 2200

R2 2500

Closing Price 2360

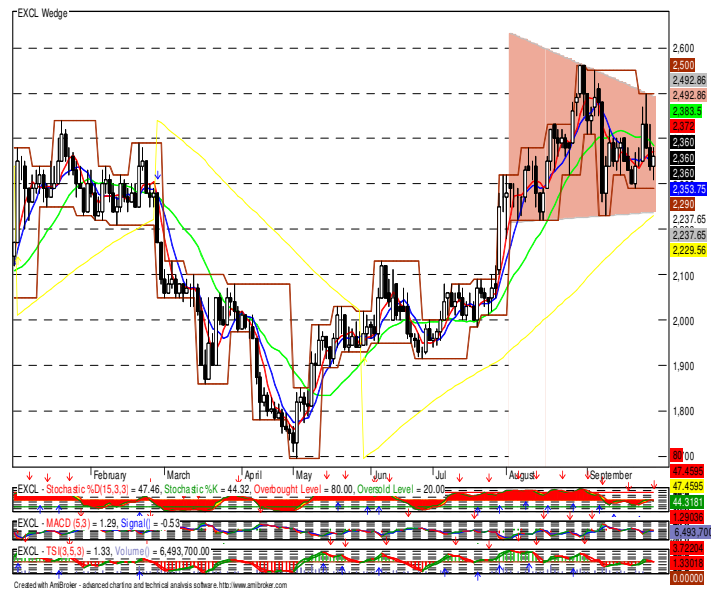
Analyses

- MACD & signal line seen in positive indication
- Stochastics fast line & slow indicates positive momentum
- Candle chart pattern indicates reversal potential
- RSI is inside neutral area
- The price on lower band area

Recommendation

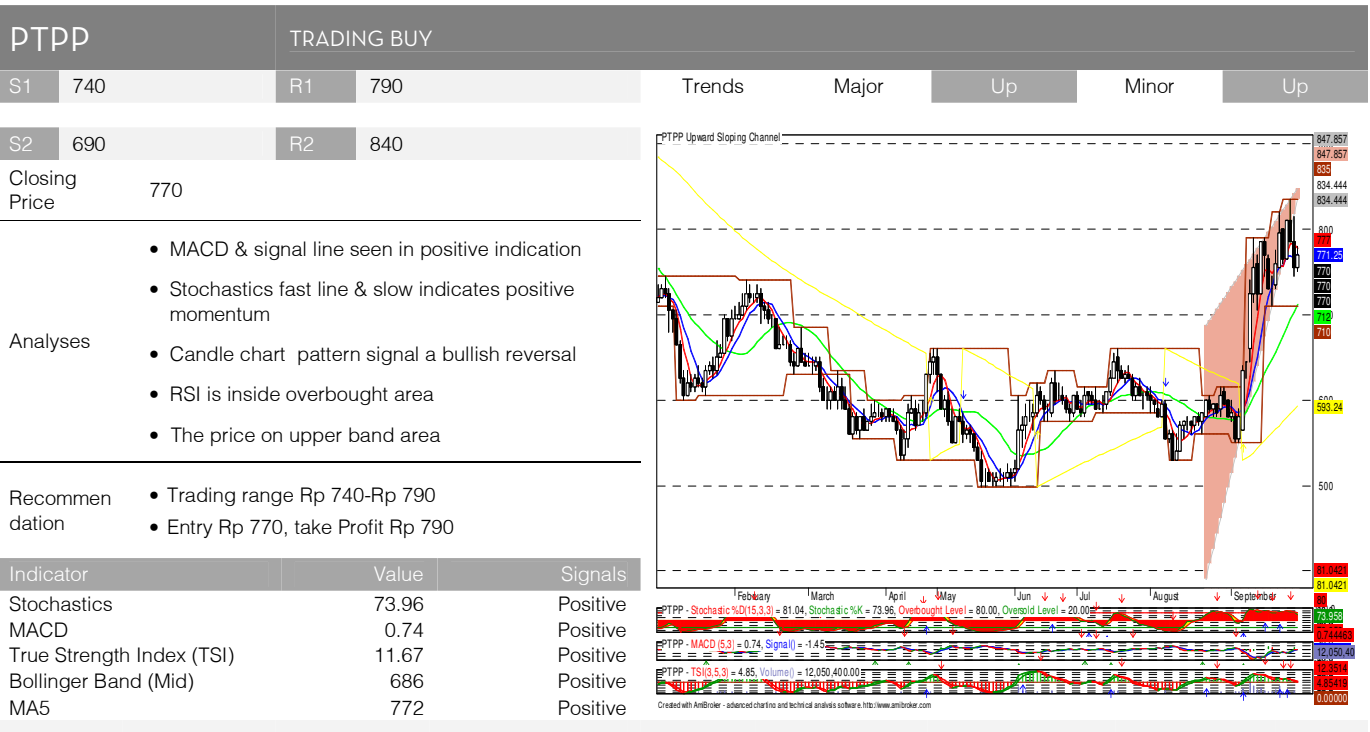
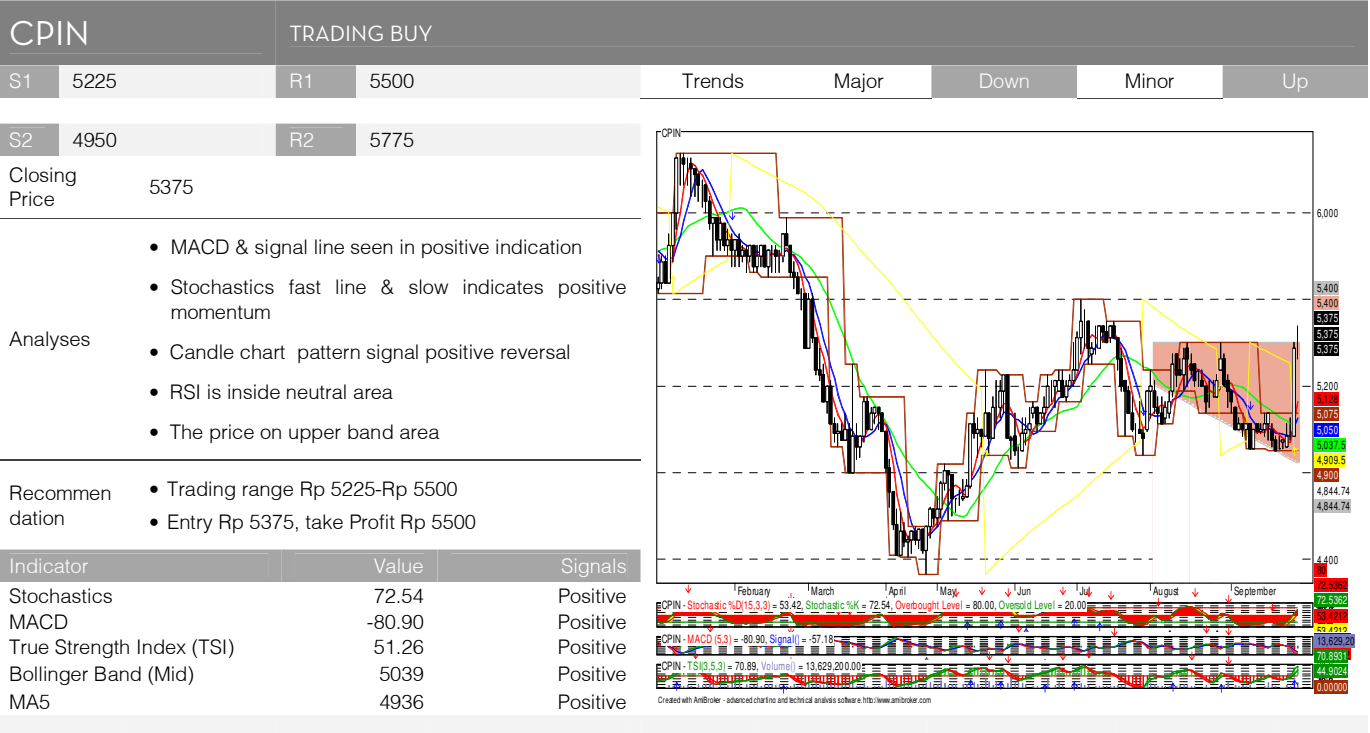
- Trading range Rp 2300-Rp 2400
- Entry Rp 2300, take Profit Rp 2400

Indicator	Value	Signals
Stochastics	44.32	Positive
MACD	1.29	Positive
True Strength Index (TSI)	1.33	Negative
Bollinger Band (Mid)	2405	Negative
MA5	2350	Positive



Technical Analysis

29 September 2023



Disclaimer

This report is prepared by PT KB Valbury Sekuritas, a member of the Indonesia Stock Exchange, or its subsidiaries or its affiliates ("KBVS"). All the material presented in this report is under copyright to KBVS. None of the parts of this material, nor its contents, may be copied, photocopied, or duplicated in any form or by any means or altered in any way, or transmitted to, or distributed to any other party without the prior written consent of KBVS.

The research presented in this report is based on the information obtained by KBVS from sources believed to be reliable, however KBVS do not make representations as to their accuracy, completeness or correctness. KBVS accepts no liability for any direct, indirect and/or consequential loss (including any claims for loss of profit) arising from the use of the material presented in this report and further communication given or relied in relation to this document. The material in this report is not to be construed as an offer or a solicitation of an offer to buy or sell any securities or financial products. This report is not to be relied upon in substitution for the exercise of independent judgement. Past performance and no representation or warranty, express or implied, is made regarding future performance. Information, valuations, opinions, forecasts and estimates contained in this report reflects a judgement at its original date of publication by KBVS and are subject to change without notice, its accuracy is not guaranteed or it may be incomplete.

The Research Analyst(s) primarily responsible for the content of this research report, in part or as a whole, certifies that the views about the companies and their securities expressed in this report accurately reflect his/her personal views. The Analyst also certifies that no part of his/her compensation was, is or will be related to specific recommendation views expressed in this report. It also certifies that the views and recommendations expressed in this report do not and will not take into account client circumstances, objectives, needs and no intentions involved as a use for recommendations for sale or buy any securities or financial instruments.

KB Valbury Sekuritas

Headquarters

Sahid Sudirman Center Lantai 41 Unit AC
Jl. Jenderal Sudirman No. 86
Kelurahan Karet Tengsin, Kecamatan Tanah Abang
Jakarta Pusat 10220, Indonesia
T +62 21 250 98 300
F +62 21 255 33 778

Branch Office

Jakarta - Kelapa Gading

Rukan Plaza Pasifik
Jl. Raya Boulevard Barat Blok A1 No. 10
Jakarta 11620
T +62 21 - 29451577

Jakarta - Puri Indah

Rukan Grand Aries Niaga
Blok E.1 No. 1 V Jl. Taman Aries, Kembangan,
Jakarta 14450
T +62 21 - 22542390
F +62 21 - 29264310

Jakarta - Pluit

Jl. Pluit Putra Raya No. 2
Jakarta 14240
T +62 21 - 29264300
F +62 21 - 22542391

Bandung

Jl. HOS Cokroaminoto No. 82
Bandung 40171
T +62 22 - 87255888
T +62 22 - 87255800
F +62 22 - 87255811

Semarang

Candi Plaza Building Lt. Dasar
Jl. Sultan Agung No. 90-90A
Semarang 50252
T +62 24 - 3521888
T +62 24 - 8501122
F +62 24 - 8507450

Yogyakarta

Jl. Magelang KM 5.5 no. 75
Yogyakarta 55284
T +62 274 - 4469500
T +62 274 - 623111
F +62 274 - 623222

Galeri Investasi

Jakarta

Citra Garden 6 Ruko Sixth Avenue
Blok J.1 A/18 Cengkareng,
Jakarta Barat 11820
T +62 21 52392181

Semarang

Jl. MT Haryono 637 Semarang
T +62 24 8415195

Solo

Jl. Ronggowarsito No. 34
Surakarta 57118

Surabaya

Pakuwon Center Tunjungan Plaza Lantai 21
Jl. Embong Malang No.1
Surabaya 60261
T +62 31 - 2955777
T +62 31 - 2955788
F +62 31 - 2955716

Solo

Jl. Ronggo Warsito no. 34
Solo 57118
T +62 271 632888
F +62 271 656988

Malang

Jl. Pahlawan Trip no. 7
Malang 65112
T +62 341 - 585888
F +62 341 - 560056

Denpasar

Komplek Ibis Styles Hotel
Jl. Teuku Umar No. 177
Denpasar Bali 80114
T +62 361 - 255888
T +62 361 - 225229
F +62 361 - 225339

Banjarmasin

Jl. Gatot Subroto No.33 Kel. Kebun Bunga
Kec. Banjarmasin Timur
Kalimantan Selatan 70235
T +62 511 - 3265918
F +62 511 - 3253432

Manado

Kawasan Megamas, Ruko Megaprofit
Blok IF2 No. 38 Manado. 95254
T +62 431 7917 836
F +62 431 880 2129

Padang

Jl. Kampung Nias II no. 10,
Kel. Belakang Pondok,
Kec. Padang Selatan
T +62 751 8955747

Salatiga

Jl. Diponegoro No. 68, Rt. 007 Rw. 011,
Kel. Salatiga, Kec. Sidorejo 50711
T +62 298 313007

Medan

Komplek Jati Junction No. P5-5A
Jl. Perintis Kemerdekaan
Medan 20218
T +62 61 - 88816222
F 62 61 - 88816333

Pekanbaru

Komplek CNN Blok A no. 3
Pekanbaru 28291
T +62 761 - 839393
F +62 761 - 839313

Padang

Jl. Kampung Nias II no. 10,
Kel. Belakang Pondok,
Kec. Padang Selatan
T +62 751 8955747

Palembang

Komp. PTC Mall Blok I No. 7 Jl. R. Sukanto
Kel. 8 Ilir Kec. Ilir Timur II
Palembang 30114
T 07115700281

Makassar

Kompleks RUKO Citraland City Losari Makassar,
Business Park, Blok B2 No. 09
Jl. Citraland Boulevard
Kel. Maccini Sombala, Kec. Tamalate
Makassar, Sulawesi Selatan 90111
T +62 411 6000818

Galeri Investasi BEI - KBVS

Yogyakarta
Universitas Kristen Duta Wacana
T +62 274 - 544032

Manado
Universitas Prisma Manado
T 0431 8800850

Jakarta
Universitas Gunadarma
T +62 21 - 8727541